



GENUINE SPARE PARTS

COMPANY INTRODUCTION

ORANGE Machinetech Pvt Ltd. located in Mumbai, India is one of the biggest supplier of tower crane and passenger hoist spare parts.

ABOUT US

ORANGE Machinetech Pvt Ltd. is one of the leading organization for After Sales Support of Construction Equipment in India. We provide a complete solution package comprising of sales, service and spares. We SALE world class high quality Lifting Equipment's. Our SERVICE determines more economical & superior quality of work to meet expectations of Construction Industry. We provide Genuine SPARE PARTS.

ORANGE follows Customer Value = Company Value = Staff Value all the time. We obey the business philosophy of "provide the most valuable product & service to the client". Our success has been built on the foundation of ability to understand customer's need and provide machinery support which increases their profitability & satisfaction. With best of our engineers, technicians and high service standards, we offer unparalleled after sales support to ensure our equipment provide maximum output with minimum downtime. Our employee solidifies with sincerity, one heart & one mind.

MISSION:

Orange machinetech Pvt. Ltd. is committed to simplify equipment SALES, SERVICE & SPARE PARTS jobs in Construction Equipment Industry & create felling of "PROUD ASSOCIATION" in the mind of Customers, Employees and Vendors.

VISION:

Orange Machinetech Pvt.Ltd aspires to become the most favourable "SOLUTION PROVIDER" in Construction Equipment Industry.

INDUSTRIES WE SERVE



REAL ESTATE



POWER PLANTS



ROAD BRIDGES



METRO PLANTS



PORT & SHIPYARDS

CONTENTS

● Standard Tower Crane Technical Data	03
● Tower Crane Spare Parts	
■ Steel Structure	05
Mast Section	
Fixing Angle	
Anchorage Frame	
Telescopic Cage	
Basic Mast	
Adaptor Mast	
Jib	
Hook & Pulley Assembly	
Trolley	
Mast Section Ladder, Platform	
Bolt and Pin	
■ Hoist Mechanism	11
RCS Hoist Mechanism & Parts	
PC Hoist Mechanism & Parts	
LVF/JLF Hoist Mechanism & Parts	
■ Slewing Mechanism & Parts	16
RCV Slewing Mechanism & Parts	
■ Trolley Mechanism.....	18
JXL /JXF Trolley Mechanism & Parts	
■ Electrical Parts	21
■ Other Parts	23
● Passenger Hoist Spare Parts	27

STANDARD TOWER CRANE TECHNICAL DATA

Crane Type	Model	Jib Length(m)	Max Capacity(t)	Tip Load(t)	Free Standing Height(m)	Mast(m)	Model of Mast
Topkit	H20/15(QTZ115)	60	8	1.5	50.8	1.6	L46A1
					59.8	2	L68A1
	F0/23B(QTZ145)	50	10	2.3	44.8	1.6	L46A1
					59.8	2	L68A1
	H25/15(QTZ145)	60	10	1.5	44.8	1.6	L46A1
					59.8	2	L68A1
	H25/23(QTZ180)	60	10	2.3	59.8	2	L68A1
	H3/36B(QTZ250)	60	12	3.6	51.4	2	L68B1/L68B2
	K30/30(QTZ250)	70	12	3	51.4	2	L68B1/L68B2
	K35/32(QTZ270)	70	14	3.2	51.4	2	L68B1/L68B2
	K40/26(QTZ280)	70	16	2.6	51.4	2	L68B1/L68B2
	K40/21(QTZ280)	70	16	2.1	51.4	2	L68B1/L68B2
	S290H20(QTZ290)	60	20	3.8	51.2	2	L68B1/L68B2
	S315K18(QTZ315)	70	18	3.2	51.4	2	L68B1/L68B2
	S315K16B(QTZ315)	70	16	3.2	61.9	2	L68B1/L68B2
	K50/50(QTZ450)	70	20	5	78.9	2.5	2.5*2.5*6
	K50/50C(QTZ450)	70	20	5	42.7	2	L68B1/L68B2
	K50/70(QTZ500)	70	20	6	66.9	2.5	2.5*2.5*6
	S450L25(QTZ450)	75	25	4	77.9	2.5	2.5*2.5*6
	S560K25(QTZ560)	70	25	7.25	77.9	2.5	2.5*2.5*6
	S560K25B(QTZ560)	70	25	7.25	75	2.5	2.5*2.5*6
	S650H24(QTZ500)	60	24	10.2	66.9	2.5	2.5*2.5*6
	S650M25(QTZ650)	80	25	6.1	59.9	2.5	2.5*2.5*6
	S650M25B(QTZ650)	80	25	6.1	57.1	2.5	2.5*2.5*6
	S650M32(QTZ650)	80	32	6.18	60	2.5	2.5*2.5*6
	S650M32B(QTZ650)	80	32	6.18	57.09	2.5	2.5*2.5*6
	M50/78(QTZ800)	80	20	7.8	80.4	4	4*4*5.7
	K80/115(QTZ1000)	70	32	11.5	90.2	4	4*4*5.7
	M100/75(QTZ1000)	80	40	7.5	78.8	4	4*4*5.7
	M125/75(QTZ1000)	80	50	6.9	78.8	4	4*4*5.7
	M125/75(QTZ1000)	80	50	6.8	78.8	4	4*4*5.7
	M125/75(QTZ1000)	80	50	7.5	78.8	4	4*4*5.7
S1200M40(QTZ1200)	80	40	5.6	78.8	4	4*4*5.7	
S1200K50(QTZ1200)	70	50	11.5	90.6	4	4*4*5.7	
S1200K64(QTZ1200)	70	64	17.3	84.5	4	4*4*5.7	
S1200M64(QTZ1200)	80	64	13.1	84.5	4	4*4*5.7	

Crane Type	Model	Jib Length(m)	Max Capacity(t)	Tip Load(t)	Free Standing Height(m)	Mast(m)	Model of Mast
Topless	R55/15(R55/15)	60	8	1.5	46.35	1.6	L46A1
	SP60/10 (QTZ125)	60	8	1	46.35	1.6	L46A1
	SP60/10 (QTZ125)	60	8	1	52.35	1.6	L46A1
	SP60/13 (QTZ125)	60	8	1.3	46.35	1.6	L46A1
	SP60/13 (QTZ140)	60	8	1.3	52.35	1.6	L46A1
	R70/15(R70/15)	70	8	1.5	60.5	2	L68A1
	R70/15B(R70/15B)	70	10	1.5	60.5	2	L68A1
	R70/27(R70/27)	70	12	2.7	61.9	2	L68B1/L68B2
	R70/27B(R70/27)	70	12	2.7	63.4	2	L68B1/L68B2
	R75/20(R75/20)	75	12	2	61.9	2	L68B1/L68B2
	R75/20B(R75/20)	75	12	2	63.4	2	L68B1/L68B2
	R75/20C(R75/20C)	75	12	2	51.4	2	L68B1/L68B2
	R75/25(R75/25)	75	18	2.5	61.74	2	L68B1/L68B2
	R75/25B(R75/25B)	75	18	2.5	63.24	2	L68B1/L68B2
	R80/36(R80/36)	80	25	3.6	72.4	2.5	2.5*2.5*6
S2000K80 (S2000K80)	70	80	24	56.5	3	3*3*6	

Crane Type	Model	Jib Length(m)	Max Capacity(t)	Tip Load(t)	Free Standing Height(m)	Mast(m)	Model of Mast
Luffing-Jib	S50L4(S50L4)	20.8	4	2.5	26.4	1.2	1.2*1.2
	S64L4(S64L4)	18.6	4	3	48.58	1.6	1.6*1.6
	QTD160(D160D8)	40	8	2.65	33.62	1.6	L46A1
	EL15/22(D160E6)	45	4.75	2.2	52.05	2	L68A1
					34.05	1.6	L46A1
	EL20/22(D160E8)	45	4.75	2.2	52.05	2	L68A1
					34.05	1.6	L46A1
	FL20/30(D160E8)	50	6.5	3	48.67	2	L68A1
	FL25/24(D140F10)	50	6.5	3	36.67	1.6	L46A1
	FL25/30(D200F10)	50	6.5	3	48.67	2	L68A1
	FL30/30(D216F12)	50	6.5	3	52.05	2	L68A1
	HL45/28(D260H18)	60	11.4	2.8	47.7	2	L68A1
S480LH24(D480G12)	60	15.6	5	63.3	2.5	2.5*2.5*6	
QTD800/50(D800L50)	75	16	4.5	65.7	4	4*4*5.7	

MAST SECTION



S24 Mast Section
S24



L68A1 Mast Section
L68A1

STEEL STRUCTURE



L46A1/L46A3 Mast Section
L46A1/L46A3



L46A1/L46A3 Mast Section
L46A1/L46A3

T
O
W
E
R

C
R
A
N
E

S
P
A
R
E

P
A
R
T
S



L68B2/L68B3 Mast Section
L68B2/L68B3



132HC/154HC/120HC
132HC/154HC/120HC



L69B2 Mast Section
L69B2



290HC/256HC
290HC/256HC

FIXING ANGLE



1.6m/2m Fixing Angle
1.6m/2m



1.6m/2m Fixing Angle
1.6m/2m



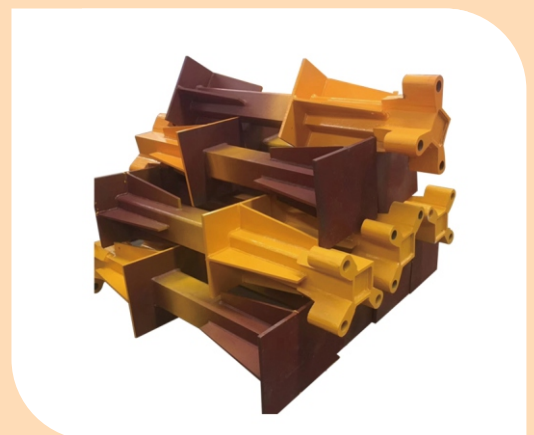
154HC/290HC Fixing Angle
154HC/290HC



P21A(2m Reinforced Fixing Angle)
P21A 2



Reusable Fixing Angle

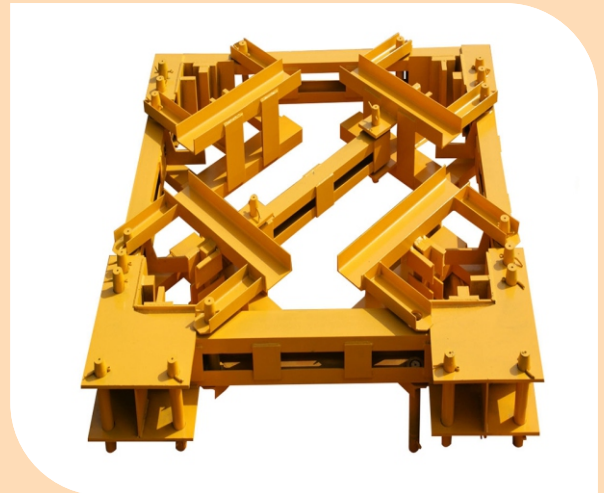


Fixing Angle

ANCHORAGE FRAME



Anchorage Frame



1.6m/2m Anchorage Frame
1.6m/2m

T
O
W
E
R

C
R
A
N
E

S
P
A
R
E

P
A
R
T
S

TELESCOPIC CAGE



1.6m/2m Telescopic Cage

BASIC MAST



7.5m Basic Mast

ADAPTOR MAST



1.2m/1.6m 1.6m/2m Adaptor Mast
1.2m/1.6m 1.6m/2m

JIB SECTION



HOOK&PULLEY ASSY



TROLLEY



T
O
W
E
R

C
R
A
N
E

S
P
A
R
E

P
A
R
T
S

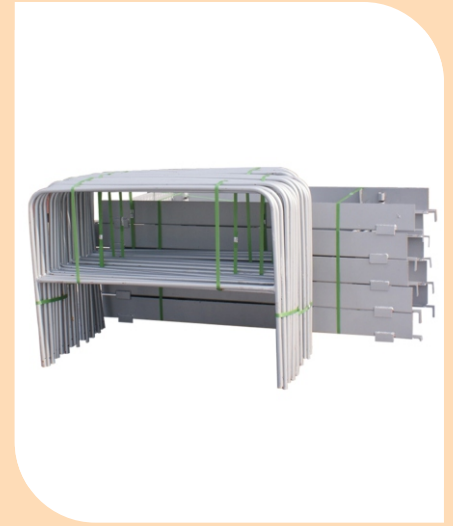
MAST SECTION LADDER, PLATFORM



Steel Ladder



Aluminium Ladder



Platform

T
O
W
E
R
C
R
A
N
E
S
P
A
R
E
P
A
R
T
S

BOLT AND PIN



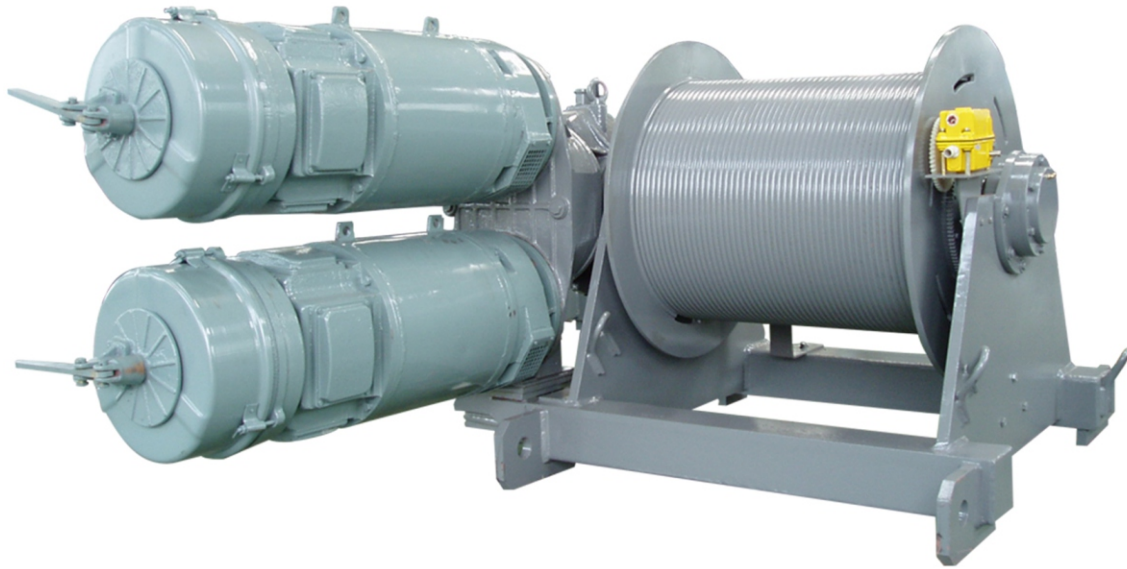
Mast Bolt



50/55/65mm pin

RCS HOIST MECHANISM

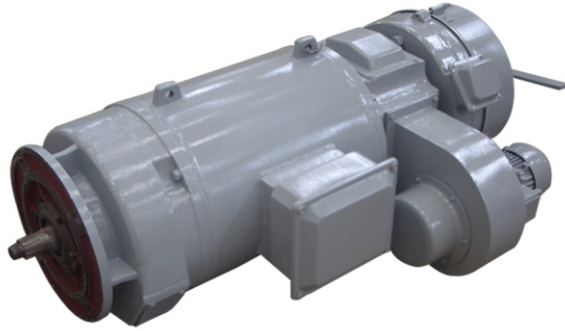
HOST MECHANISM



RCS MECHANISM

Model	45RCS20	55RCS25	70RCS25	70RCS30	70RCS40
Rated Single Rope Tension KN	20	25	25	30	40
Magnification	4	4	4	4	4
Rated Power of the motor KW	33	41	51.5	51.5	51.5
Working Frequency Hz	50	50	50	50	50
Hoisting Speed m/min	20/40	21/42	25/50	12/6	15/30
Hoisting Capacity t	8/4	10/5	10/5	12/6	16/8
Rope capacity	328(5层)	500(5层)	550(5层)	525(5层)	550(5层)
Nominal Diameter of Wire rope mm	13	14	14	18	20

HOIST MOTOR



T
O
W
E
R

C
R
A
N
E

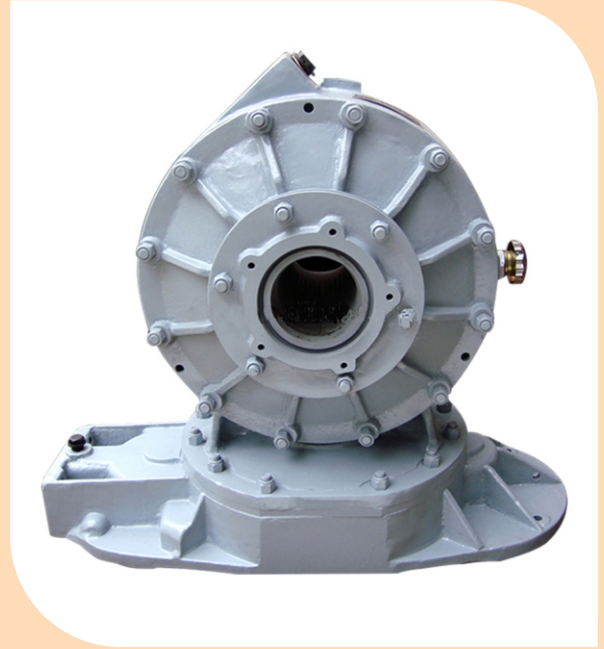
S
P
A
R
E

P
A
R
T
S

REISITANCE BOX



HOIST REDUCER



HOIST CONTROL PANEL BOX



BEVEL GEAR



19, 38, 99PINION

19, 38, 99



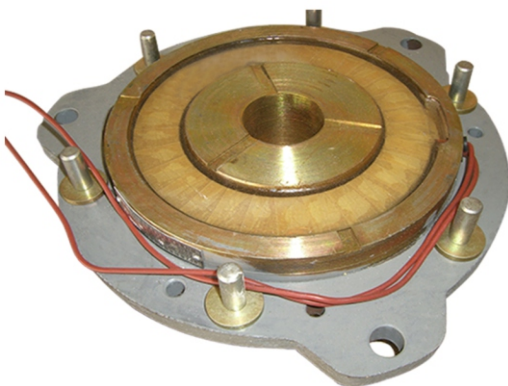
T
O
W
E
R

C
R
A
N
E

S
P
A
R
E

P
A
R
T
S

FIXED MAGNET



FIXED MAGNET



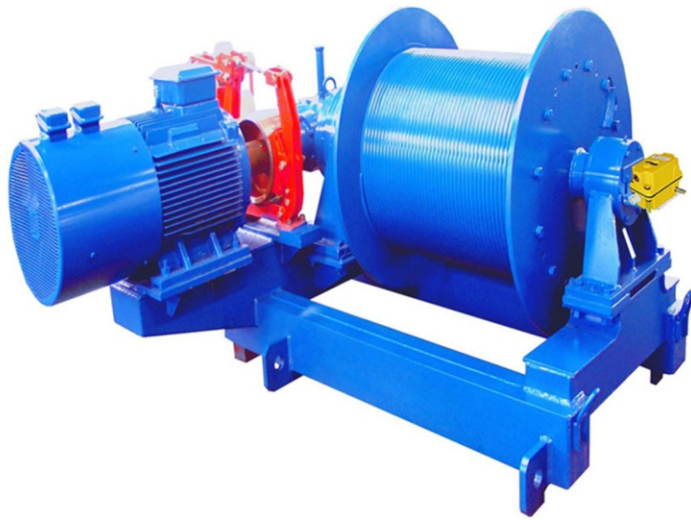
PC HOIST MECHANISM



PC MECHANISM

Model	25PC13	33PC15	40PC20
Rated Single Rope Tension KN	13	15	20
Magnification	4	4	4
Rated Power of the motor KW	18/18/3.5	24/24/5.5	30
Working Frequency Hz	50	50	50
Hoisting Speed m/min	33.5-17-3	37.5/19/3	35-17.5-3
Hoisting Capacity t	2.5-2.5-5	3-6-6	2-4-8
Rope capacity	360	400	440
Nominal Diameter of Wire rope mm	10	12	14

LVF/JLF HOIST MECHANISM



Inverter



Hoist control panel box

LVF/JLF MECHANISM

Model	24JLF15		30JLF20		45JLF25		55JLF30		75JLF40	
Rated Single Rope Tension KN	15		20		25		30		40	
Magnification	2	4	2	4	2	4	2	4	2	4
Rated Power of the motor KW	24		30		45		55		75	
Hoisting Speed m/min	80-40/ 40-0	40-20/ 20-0	80-40/ 40-0	40-20/ 20-0	90-45/ 45-0	45-22/ 22-0	92-46/ 46-0	46-23/ 23-0	96-48/ 48-0	48-24/ 24-0
Hoisting Capacity t	1.5/3	3/6	2/4	4/8	2.5/5	5/10	3/6	6/12	4/8	8/16
Rope capacity	360		400		550		630		620	
Nominal Diameter of Wirerope mm	12		14		14		18		20	

RCV SLEWING MECHANISM

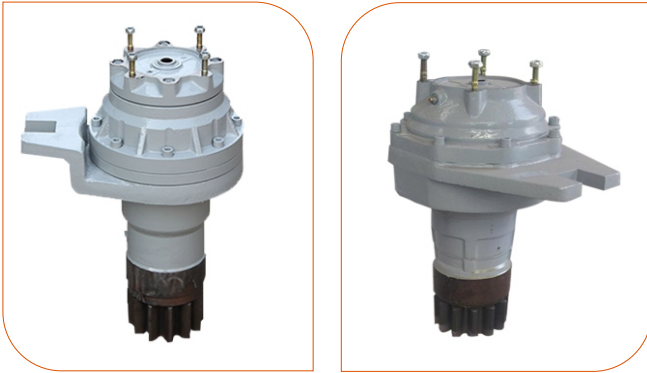
HOST MECHANISM



RCV MECHANISM

Model	Rated output torque	Motor Power	Transmit Rate	Applicable Crane
RCV95	5000	95NM	140.8	T5513;T5515;T6014;T6018;F0/23B; T6015;T6025;TL160
RCV120	12000	120NM	163.17	T6025
RCV145	12000	145NM	163.17	H3/36B;T7030;T7032;T7027; TT6520;TT7524;TL225
RCV185	12000	185NM	163.17	T7050-20;T8030-25;TT8030-20/25
5.5SVF	5000	5.5KW	140.8	T5513;T5515;T6014;T6018;F0/23B; T6015;T6025;TL225
9SVF	12000	9KW	163.17	H3/36B;T7030;T7032;T7027; TT6520;TT7524;TL225
11SVF	12000	11KW	163.17	T7050-20;T8030-25;TT8030-20/25

SLEWING REDUCER



Jh08 Slewing Reducer



Jh02 Slewing Reducer

T
O
W
E
R

C
R
A
N
E

S
P
A
R
E

P
A
R
T
S

SLEWING MOTOR



SLEWING RING



DRIVE SHAFT



PLANET GEAR



TROLLEY MECHANISM



JXL/JXF Trolley Mechanism

Drum



Trolley Motor

JXL (JXF)

Model	95JXL2	4JXF4	120JXL	6JXF5	185JXL	7.5JXF8	11JXF10	15JXF16	18JXF25	24JXF33
Rated Power of the motor KW	/	4	/	5.5	/	7.5	11	15	18.5	24
Rated Stalling Torque of Torque motor N.m	95	/	120	/	185	/	/	/	/	/
Rated single rope tension N	4500		5400		7100		10000	16000	25000	33000
Variable Speed m/min	0-58		0-63		0-65		0-65	0-62	0-32	0-25
Variable Range m	60		73		75		83	85	80	80
Nominal Diameter of Wire rope mm	7.7		8		9		10	13	13	16
Rated Hoisting Weight of tower crane t	8,10		12		16,18		20,24	25,32	40,50	64

SLEWING BLOCK



OMD Slewing Block



YONGMAO RTC Slewing Block

T
O
W
E
R
C
R
A
N
E
S
P
A
R
E
P
A
R
T
S



CSCT Slewing Block



SYM HRCV Slewing Block

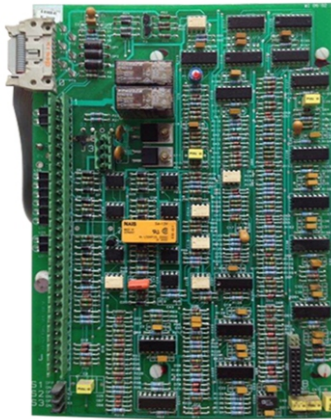


RCV Slewing Block



SCM RCV Slewing Block

POTAIN SLEWING BLOCK



RCV Slewing Block B-61406-33



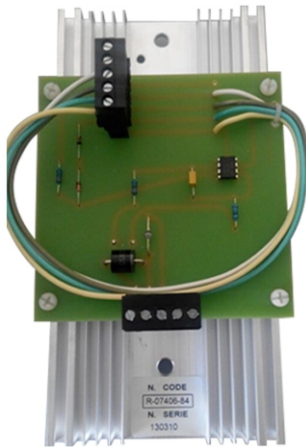
VAC Trolley Block X-14406-72

T
O
W
E
R

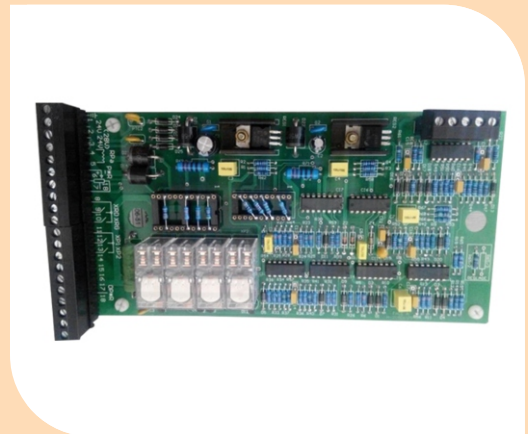
C
R
A
N
E

S
P
A
R
E

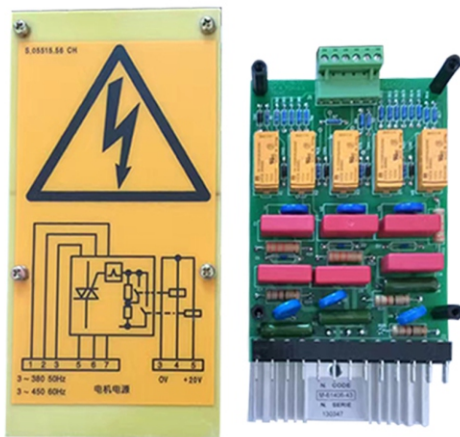
P
A
R
T
S



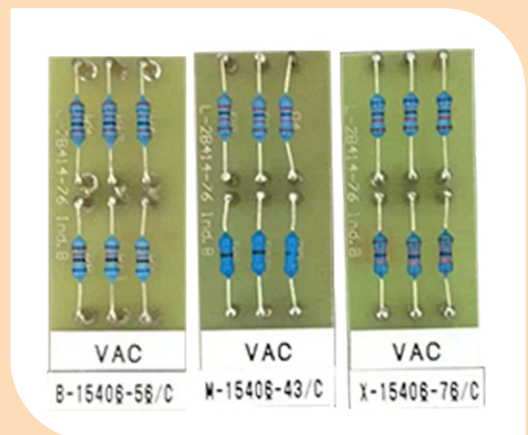
VAC Slewing Block R-07406-84



RCV Slewing Block V-61406-51



VAC Slewing Block M-61406-43



Resistor Chip

ELECTRICAL PARTS



Load Moment Indicator



Anemometer

T
O
W
E
R

C
R
A
N
E

S
P
A
R
E

P
A
R
T
S



Load Limit Switch



Transformer

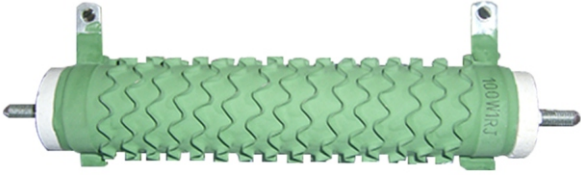


Contactor

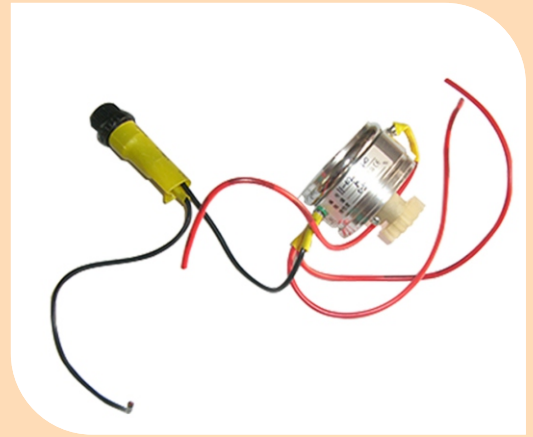


Limit Switch

ELECTRICAL PARTS



Resistor



Potentiometer



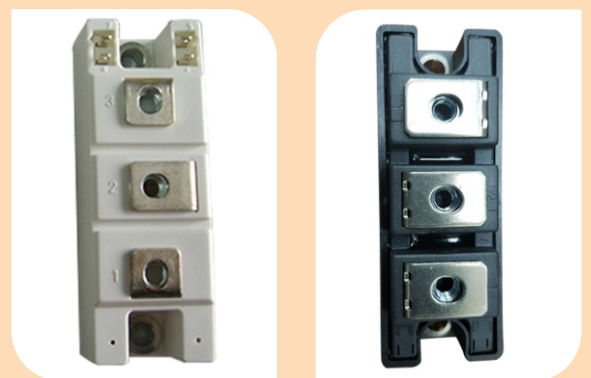
Encoder



Brake Unit



Solar Warning Lamp



Thyristor

T
O
W
E
R

C
R
A
N
E

S
P
A
R
E

P
A
R
T
S

PULLEY



Nylon Pulley



Steel Pulley



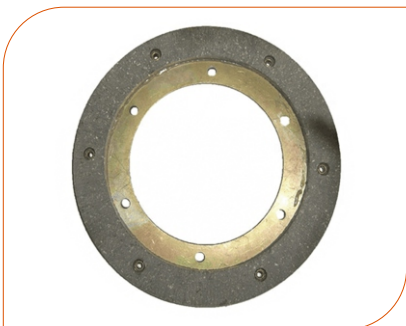
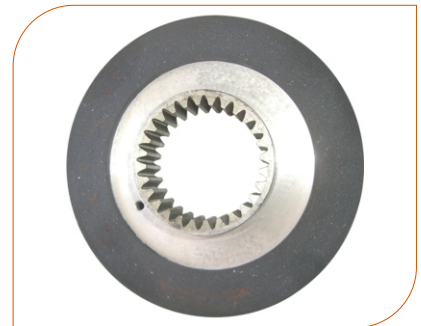
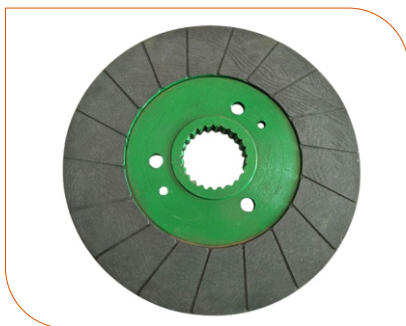
T
O
W
E
R

C
R
A
N
E

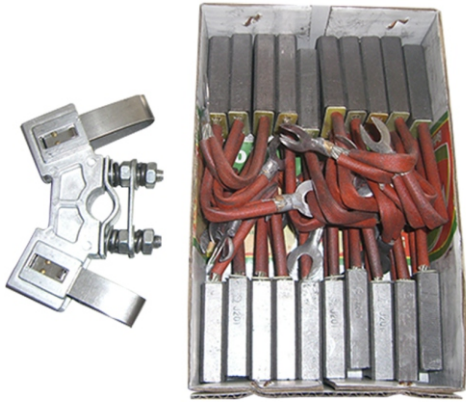
S
P
A
R
E

P
A
R
T
S

BRAKE DISC



HOIST CARBON BRUSH



OMD CARBON BRUSH



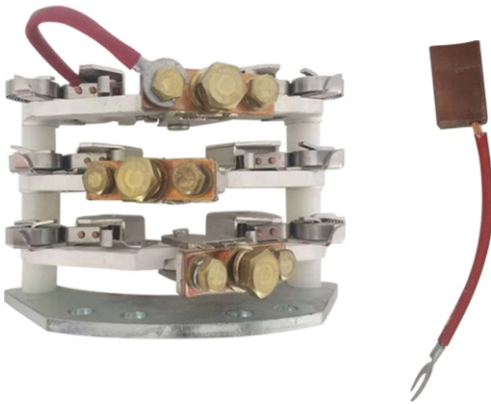
T
O
W
E
R

C
R
A
N
E

S
P
A
R
E

P
A
R
T
S

POTAIN CARBON BRUSH



SLIP RING



CABLE



WIRE ROPE



OMD PULLEY



PUMP AND CYLINDER



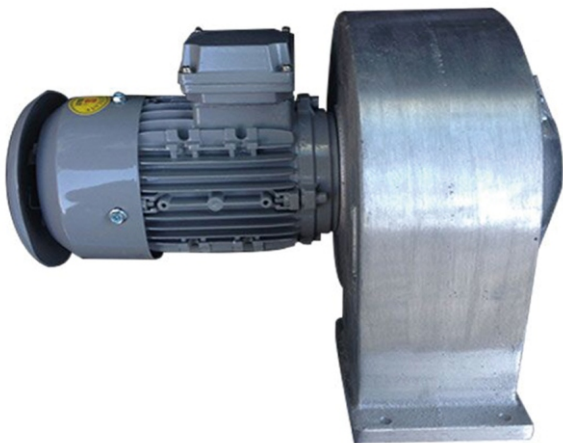
T
O
W
E
R

C
R
A
N
E

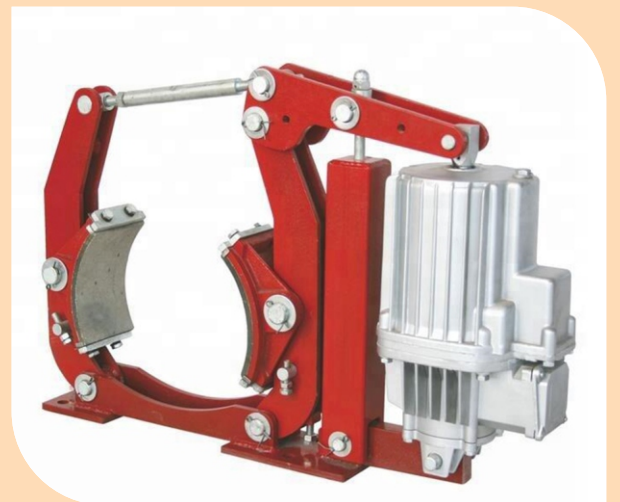
S
P
A
R
E

P
A
R
T
S

FAN MOTOR



HYDRAULIC THRUSTER



JOYSTICK



T
O
W
E
R
C
R
A
N
E
S
P
A
R
E
P
A
R
T
S

CABIN



CHAIR



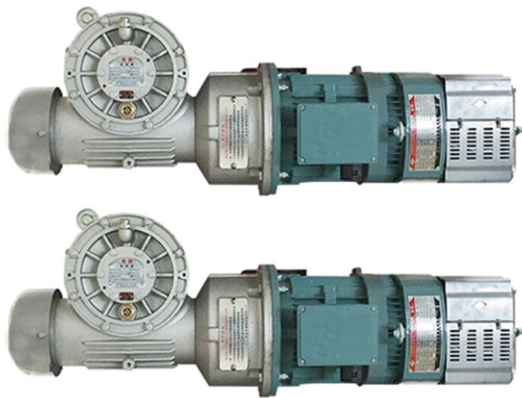
PASSENGER HOIST PARTS



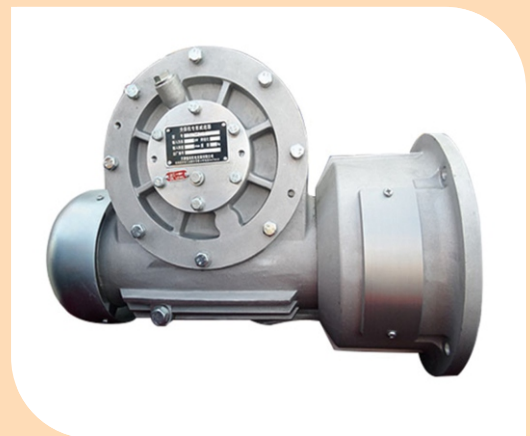
Mast Section



Anchorage Frame



Drive Mechanism



Reducer



Motor



Safety device

P
A
S
S
E
N
G
E
R

H
O
I
S
T

S
P
A
R
E

P
A
R
T
S

PASSENGER HOIST PARTS



Pinion



Counter Roller



Door Pulley



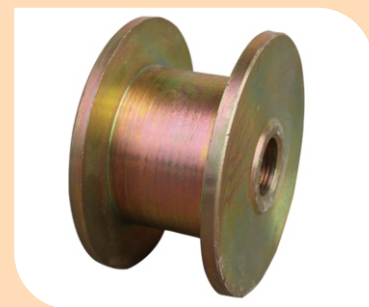
Rack



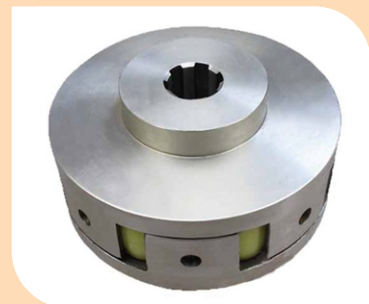
Roller



Counter Weight Wheel



Gate Roller



Coupling

P
A
S
S
E
N
G
E
R

H
O
I
S
T

S
P
A
R
E

P
A
R
T
S

PASSENGER HOIST PARTS



3 Phase Limit Switch



Overload



Door Limit Switch



Limit Switch



Hander Switch



Adjustment Unit

P
A
S
S
E
N
G
E
R

H
O
I
S
T

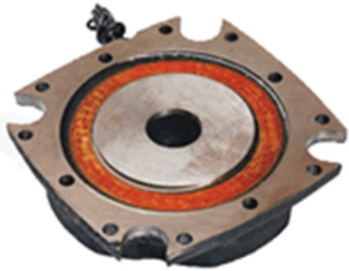
S
P
A
R
E

P
A
R
T
S

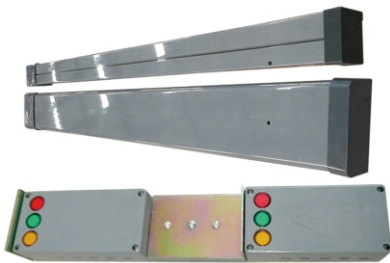
PASSENGER HOIST PARTS



Pinion



Counter Roller



Door Pulley



Rack



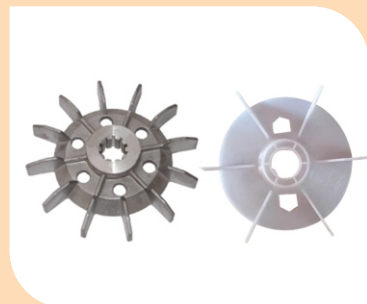
Roller



Counter Weight Wheel



Gate Roller



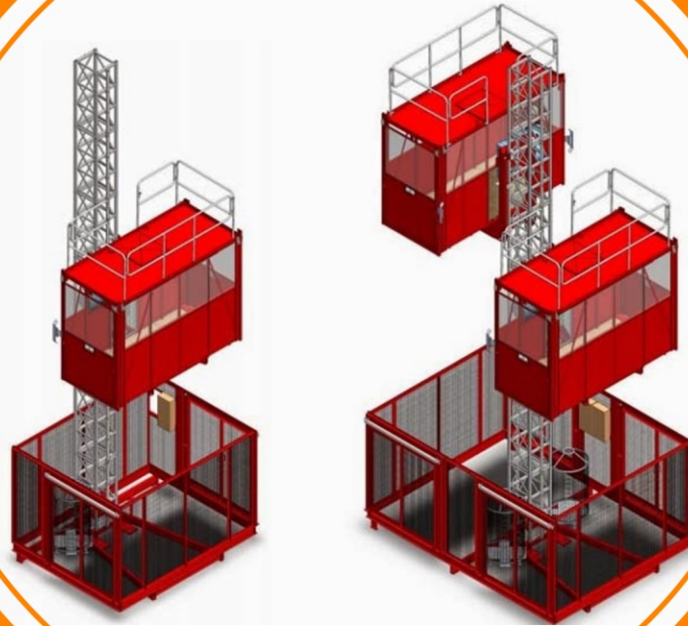
Coupling

P
A
S
S
E
N
G
E
R

H
O
I
S
T

S
P
A
R
E

P
A
R
T
S



🏠 **DOMESTIC OFFICE** - Orange Machinetech Pvt Ltd.
#3rd Floor, B25, High Street Mall, Majiwada Circle,
Thane (W) Mumbai, India - 400607.

🏠 **INTERNATIONAL OFFICE** - Orange Machinetech Pvt Ltd
#843, No.81 Pangjiang street, Dadong district,
Shenyang, China - 110001.

✉️ rohit.badki@orangemachinetech.com
atul.mankar@orangemachinetech.com
abhineet.kumar@orangemachinetech.com

👤 Rohit Badki, Atul Mankar, Abhineet Kumar

☎️ (+91) 8879151567, (+91) 9890988511, (+91) 7506102667